

Click to view price, real time Inventory,  
Delivery & Lifecycle Information ;

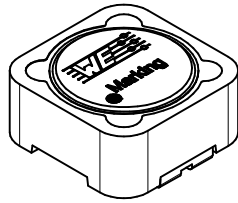
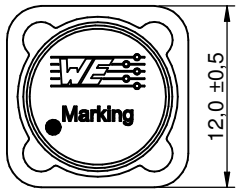
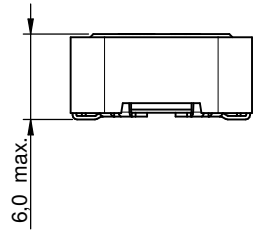
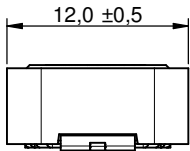
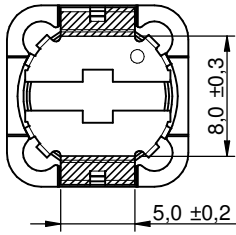
**744771122**

**Würth Electronics**

Fixed Inductors WE-PD 1260 22uH 3.37A .036Ohm

Any questions, please feel free to contact us.  
[info@kaimte.com](mailto:info@kaimte.com)

## Dimensions: [mm]

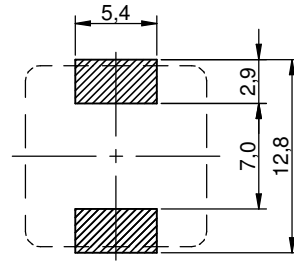


Scale - 2:1

## Product Marking:

Start of Winding	•
Marking	220 (Inductance Code)

## Recommended Land Pattern: [mm]



no vias and sensitive traces underneath the component

Scale - 2:1

## Schematic:



## Electrical Properties

Properties
Inductance
Rated Current
Saturation Current
DC Resistance
DC Resistance
Self Resonant Frequency
Operating Voltage

## Certification:

RoHS Approval
REACH Approval
Halogen Free

## General Information

It is recommended
Ambient Temperature (T <sub>R</sub> )
Operating Temperature
Storage Conditions (packaging)
Moisture Sensitivity
Test conditions

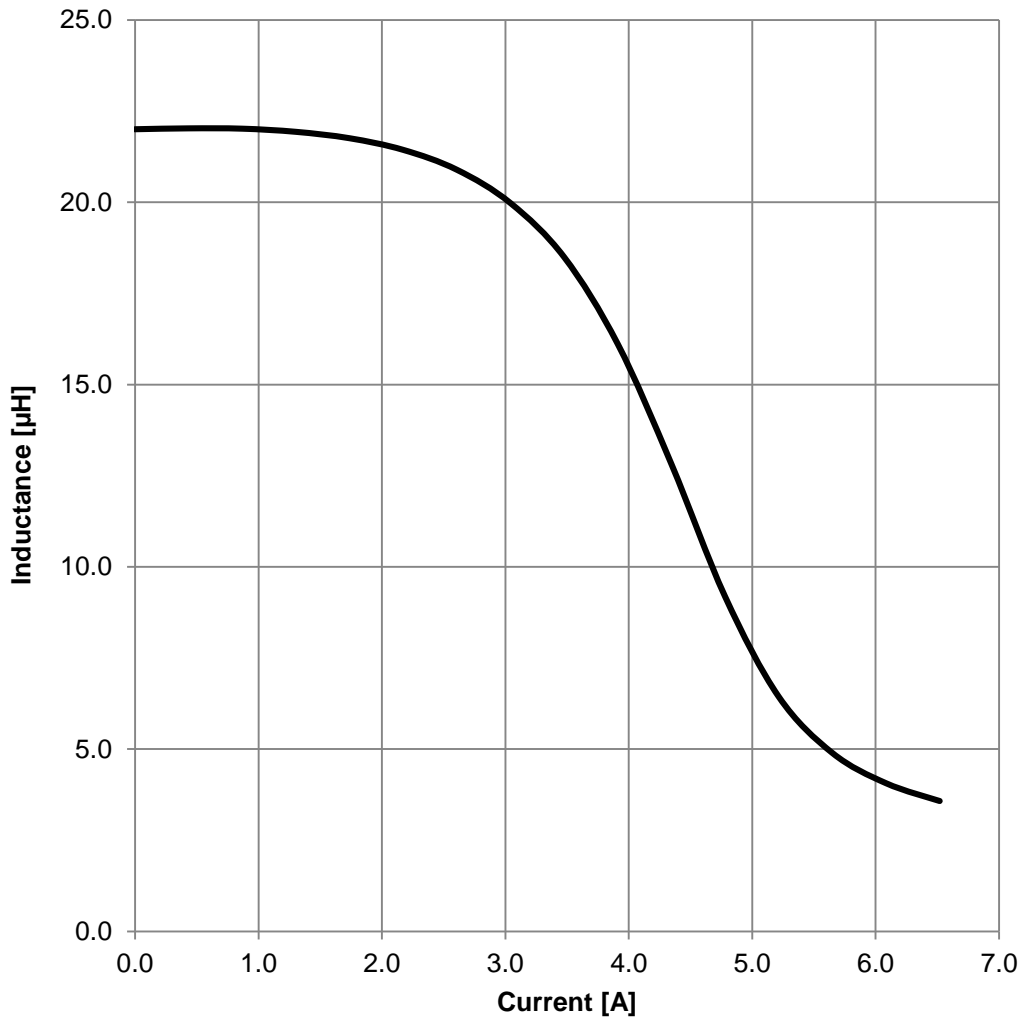


Würth Elektronik eiSos GmbH & Co. KG  
EMC & Inductive Solutions  
Max-Eyth-Str. 1  
74638 Waldenburg  
Germany  
Tel. +49 (0) 79 42 945 - 0  
www.we-online.com  
eiSos@we-online.com

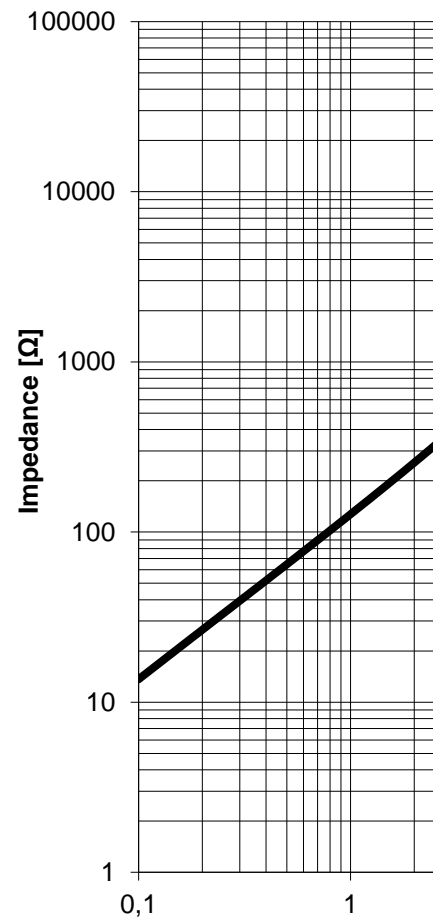
CHECKED	REVISION
ALa	006
DESCRIPTION	
<b>WE-PD SM Inductor</b>	
SIZE/TYPE	
1260	






This electronic component has been designed and developed for usage in general electronic equipment only. This product is not authorized for use in equipment where a higher safety standard and reliability standard is especially required or where a failure of the product is reasonably expected to cause severe personal injury or property damage. Würth Elektronik eiSos GmbH & Co KG products are neither designed nor intended for use in areas such as military, aerospace, aviation, nuclear control, submarine, transportation (automotive control, train control, ship control), transportation signal, disaster prevention, medical, public information network etc.. Würth Elektronik eiSos GmbH & Co KG must be notified if the product is used in such areas. The use of this product must be performed on every electronic component which is used in electrical circuits that require high safety and reliability functions or performance.

### Typical Inductance vs. Current Characteristics:



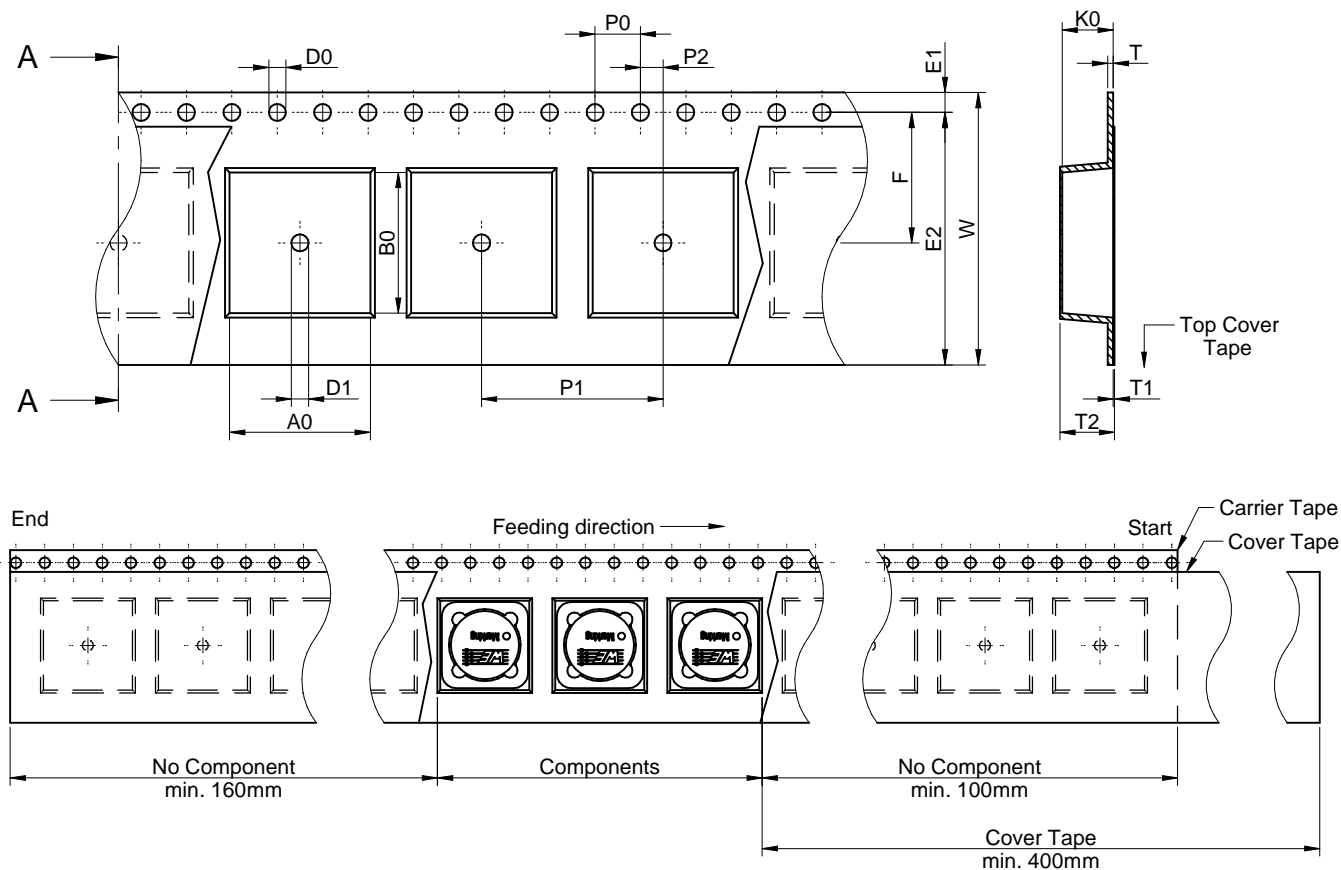
### Typical Impedance Characteristics



   	CHECKED	REVISION
	ALa	006
	WÜRTH ELEKTRONIK eiSos GmbH & Co. KG EMC & Inductive Solutions Max-Eyth-Str. 1 74638 Waldenburg Germany Tel. +49 (0) 79 42 945 - 0 www.we-online.com eiSos@we-online.com	
	DESCRIPTION <b>WE-PD SM Inductor</b>	
	SIZE/TYPE	1260

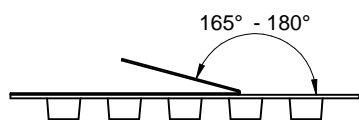
This electronic component has been designed and developed for usage in general electronic equipment only. This product is not authorized for use in equipment where a higher safety standard and reliability standard is especially required or where a failure of the product is reasonably expected to cause severe personal injury or property damage. Würth Elektronik eiSos GmbH & Co KG products are neither designed nor intended for use in areas such as military, aerospace, aviation, nuclear control, submarine, transportation (automotive control, train control, ship control), transportation signal, disaster prevention, medical, public information network etc.. Würth Elektronik eiSos GmbH & Co KG must be held responsible for any damage caused by the use of this product in such areas. The use of this product in such areas must be performed on every electronic component which is used in electrical circuits that require high safety and reliability functions or performance.

# Packaging Specification - Tape and Reel: [mm]



packaging is referred to the international standard IEC 60286-3:2013

	A0	B0	W	T	T1	T2	K0	P0	P1	P2	D0	D1	E1	E2	F	Tape type 2a	Packaging unit
tolerance	typ.	typ.	+0,3/ -0,1	ref.	max.	typ.	typ.	±0,1	±0,1	±0,1	+0,1/ -0,0	min.	±0,1	min.	±0,1	Polystyrene	pcs.
value	12,40	12,40	24,00	0,50	0,10	6,80	6,30	4,00	16,00	2,00	1,50	1,50	1,75	22,25	11,50		500



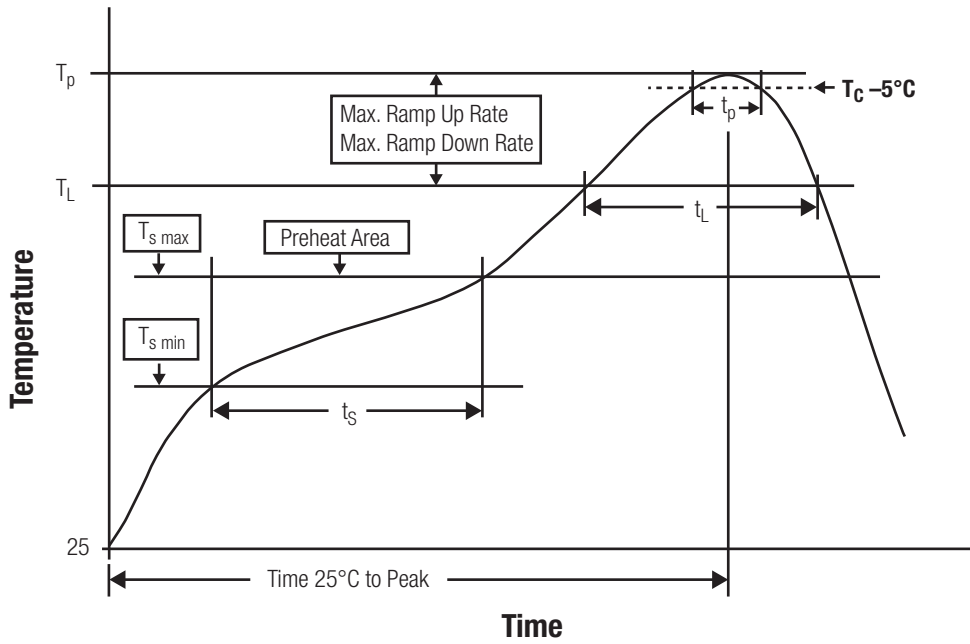
Tape width	24 mm	Pull-of force
		0,1 N - 1,3 N

This electronic component has been designed and developed for usage in general electronic equipment only. This product is not authorized for use in equipment where a higher safety standard and reliability standard is especially required or where a failure of the product is reasonably expected to cause severe personal injury or property damage. Würth Elektronik eiSos GmbH & Co KG products are neither designed nor intended for use in areas such as military, aerospace, aviation, nuclear control, submarine, transportation (automotive control, train control, ship control), transportation signal, disaster prevention, medical, public information network etc... Würth Elektronik eiSos GmbH & Co KG must be held responsible for any damage caused by the use of this product in areas where a higher safety and reliability standard is required. The use of this product in such areas must be performed on every electronic component which is used in electrical circuits that require high safety and reliability functions or performance.

Tolerance	
Tape width	24mm

	CHECKED	REVISION
	ALa	006.
	DESCRIPTION	
	WE-PD SM Inductor	
Würth Elektronik eiSos GmbH & Co. KG EMC & Inductive Solutions Max-Eyth-Str. 1 74638 Waldenburg Germany Tel. +49 (0) 79 42 945 - 0 www.we-online.com eiSos@we-online.com	SIZE/TYPE	
	1260	

## Classification Reflow Profile for SMT components:



## Classification Reflow Soldering Profile

Profile Feature	Symbol	Value
Preheat Temperature Min	$T_{s \min}$	150
Preheat Temperature Max	$T_{s \max}$	200
Preheat Time $t_s$ from $T_{s \min}$ to $T_{s \max}$	$t_s$	60
Ramp-up Rate ( $T_L$ to $T_p$ )		$3^\circ$
Liquidous Temperature	$T_L$	217
Time $t_L$ maintained above $T_L$	$t_L$	60
Peak package body temperature	$T_p$	see
Time within $5^\circ\text{C}$ of actual peak temperature	$t_p$	20
Ramp-down Rate ( $T_L$ to $T_p$ )		$6^\circ$
Time $25^\circ\text{C}$ to peak temperature		8 m

refer to IPC/ JEDEC J-STD-020E

## Package Classification Reflow Temperature

Properties
PB-Free Assembly   Package Thickness < 1.6 mm
PB-Free Assembly   Package Thickness 1.6 mm - 2.5 mm
PB-Free Assembly   Package Thickness $\geq 2.5$ mm

refer to IPC/ JEDEC J-STD-020E

   	CHECKED ALa	REVISION 006.
	DESCRIPTION <b>WE-PD SM Inductor</b>	
	Würth Elektronik eiSos GmbH & Co. KG EMC & Inductive Solutions Max-Eyth-Str. 1 74638 Waldenburg Germany Tel. +49 (0) 79 42 945 - 0 www.we-online.com eiSos@we-online.com	
	SIZE/TYPE 1260	

This electronic component has been designed and developed for usage in general electronic equipment only. This product is not authorized for use in equipment where a higher safety standard and reliability standard is especially required or where a failure of the product is reasonably expected to cause severe personal injury or property damage. Würth Elektronik eiSos GmbH & Co. KG products are neither designed nor intended for use in areas such as military, aerospace, aviation, nuclear control, submarine, transportation (automotive control, train control, ship control), transportation signal, disaster prevention, medical, public information network etc... Würth Elektronik eiSos GmbH & Co. KG must be held responsible for any damage caused by the use of this product in areas where a higher safety and reliability standard is required. This product must be performed on every electronic component which is used in electrical circuits that require high safety and reliability functions or performance.

## Cautions and Warnings:

The following conditions apply to all goods within the product series of WE-PD of Würth Elektronik eiSos GmbH & Co. KG:

### General:

- This electronic component is designed and manufactured for use in general electronic equipment.
- Würth Elektronik must be asked for written approval (following the PPAP procedure) before incorporating the components into any equipment in fields such as military, aerospace, aviation, nuclear control, submarine, transportation (automotive control, train control, ship control), transportation signal, disaster prevention, medical, public information network etc. where higher safety and reliability are especially required and/or if there is the possibility of direct damage or human injury.
- Electronic components that will be used in safety-critical or high-reliability applications, should be pre-evaluated by the customer.
- The component is designed and manufactured to be used within the datasheet specified values. If the usage and operation conditions specified in the datasheet are not met, the wire insulation may be damaged or dissolved.
- Do not drop or impact the components, as the core may flake apart.
- Würth Elektronik products are qualified according to international standards, which are listed in each product reliability report. Würth Elektronik does not warrant any customer qualified product characteristics beyond Würth Elektronik's specifications, for its validity and sustainability over time.
- The responsibility for the applicability of the customer specific products and use in a particular customer design is always within the authority of the customer. All technical specifications for standard products also apply to customer specific products.

### Product specific:

#### Soldering:

- The solder profile must comply with the Würth Elektronik technical soldering specification. All other profiles will void the warranty.
- All other soldering methods are at the customers' own risk.
- Strong forces which may affect the coplanarity of the components' electrical connection with the PCB (i.e. pins), can damage the part, resulting in void of the warranty.

#### Cleaning and Washing:

- Washing agents used during the production to clean the customer application might damage or change the characteristics of the wire insulation, marking or plating. Washing agents may have a negative effect on the long-term functionality of the product.
- Using a brush during the cleaning process may break the wire due to its small diameter. Therefore, we do not recommend using a brush during the PCB cleaning process.

### Potting:

- If the product is potted in the customer application, this could lead to an incomplete seal, allowing contaminants to enter. We recommend a manual inspection after potting to avoid this.

### Storage Conditions:

- A storage of Würth Elektronik products for longer than 1 year may lead to degradation, resulting in bad solderability. Therefore, all components should be shipped.
- Do not expose the components to direct sunlight.
- The storage conditions in the original packaging are defined in the datasheet.

### Handling:

- Violation of the technical product specifications such as exceeding the maximum current may lead to damage.
- Applying currents with audio-frequency signals may result in damage.

These cautions and warnings comply with the state of the art. However, no responsibility is assumed for inaccuracies or omissions.

   	CHECKED	REVISION
	ALa	006
	DESCRIPTION	
	WE-PD SM Inductor	
Würth Elektronik eiSos GmbH & Co. KG EMC & Inductive Solutions Max-Eyth-Str. 1 74638 Waldenburg Germany Tel. +49 (0) 79 42 945 - 0 www.we-online.com eiSos@we-online.com	SIZE/TYPE	
	1260	

This electronic component has been designed and developed for usage in general electronic equipment only. This product is not authorized for use in equipment where a higher safety standard and reliability standard is especially required or where a failure of the product is reasonably expected to cause severe personal injury or property damage. Würth Elektronik eiSos GmbH & Co. KG products are neither designed nor intended for use in areas such as military, aerospace, aviation, nuclear control, submarine, transportation (automotive control, train control, ship control), transportation signal, disaster prevention, medical, public information network etc.. Würth Elektronik eiSos GmbH & Co. KG must be held responsible for the correct use of the product. The user must be performed on every electronic component which is used in electrical circuits that require high safety and reliability functions or performance.

## Important Notes

**The following conditions apply to all goods within the product range of Würth Elektronik eiSos GmbH & Co. KG:**

### 1. General Customer Responsibility

Some goods within the product range of Würth Elektronik eiSos GmbH & Co. KG contain statements regarding general suitability for certain application areas. These statements about suitability are based on our knowledge and experience of typical requirements concerning the areas, serve as general guidance and cannot be estimated as binding statements about the suitability for a customer application. The responsibility for the applicability and use in a particular customer design is always solely within the authority of the customer. Due to this fact it is up to the customer to evaluate, where appropriate to investigate and decide whether the device with the specific product characteristics described in the product specification is valid and suitable for the respective customer application or not.

### 2. Customer Responsibility related to Specific, in particular Safety-Relevant Applications

It has to be clearly pointed out that the possibility of a malfunction of electronic components or failure before the end of the usual lifetime cannot be completely eliminated in the current state of the art, even if the products are operated within the range of the specifications. In certain customer applications requiring a very high level of safety and especially in customer applications in which the malfunction or failure of an electronic component could endanger human life or health it must be ensured by most advanced technological aid of suitable design of the customer application that no injury or damage is caused to third parties in the event of malfunction or failure of an electronic component. Therefore, customer is cautioned to verify that data sheets are current before placing orders. The current data sheets can be downloaded at [www.we-online.com](http://www.we-online.com).

### 3. Best Care and Attention

Any product-specific notes, cautions and warnings must be strictly observed. Any disregard will result in the loss of warranty.

### 4. Customer Support for Product Specifications

Some products within the product range may contain substances which are subject to restrictions in certain jurisdictions in order to serve specific technical requirements. Necessary information is available on request. In this case the field sales engineer or the internal sales person in charge should be contacted who will be happy to support in this matter.

### 5. Product R&D

Due to constant product improvement product specifications may change from time to time. As a standard reporting procedure of the Product Change Notification (PCN) according to the JEDEC-Standard inform about minor and major changes. In case of further queries regarding the PCN, the field sales engineer or the internal sales person in charge should be contacted. The basic responsibility of the customer as per Section 1 and 2 remains unaffected.

## 6. Product Life Cycle

Due to technical progress and economical evaluation we also follow the standard reporting procedure of the Product Termination Notice (PTN) about inevitable product discontinuance. According to this PTN information is available. Therefore it needs to be verified with the field sales engineer availability expectancy before or when the product for application is to be used. This information does not apply in the case of individual agreements deviating from this.

## 7. Property Rights

All the rights for contractual products produced by Würth Elektronik eiSos GmbH & Co. KG, as well as models or templates that are subject to copyright, patent, trademark, or other intellectual property rights, are reserved. Würth Elektronik eiSos GmbH & Co. KG, implied, is granted under any patent right, copyright, mask work, trademark, or process in which Würth Elektronik eiSos GmbH & Co. KG is involved.

## 8. General Terms and Conditions

Unless otherwise agreed in individual contracts, all orders are subject to the General Terms and Conditions of Würth Elektronik eiSos Group, last version available at [www.we-online.com](http://www.we-online.com).

 RoHS COMPLIANT	 REACH COMPLIANT	 HALOGEN FREE	 AEC Q200	CHECKED ALa	REVISION 006.1
 <b>WÜRTH ELEKTRONIK</b>				DESCRIPTION <b>WE-PD SM Inductor</b>	
Würth Elektronik eiSos GmbH & Co. KG EMC & Inductive Solutions Max-Eyth-Str. 1 74638 Waldenburg Germany Tel. +49 (0) 79 42 945 - 0 <a href="http://www.we-online.com">www.we-online.com</a> <a href="mailto:eiSos@we-online.com">eiSos@we-online.com</a>				SIZE/TYPE 1260	

This electronic component has been designed and developed for usage in general electronic equipment only. This product is not authorized for use in equipment where a higher safety standard and reliability standard is especially required or where a failure of the product is reasonably expected to cause severe personal injury or property damage. Würth Elektronik eiSos GmbH & Co. KG products are neither designed nor intended for use in areas such as military, aerospace, aviation, nuclear control, submarine, transportation (automotive control, train control, ship control), transportation signal, disaster prevention, medical, public information network etc.. Würth Elektronik eiSos GmbH & Co. KG must be held responsible for any damage caused by the use of its products in areas where a higher safety and reliability standard is required. This warning must be performed on every electronic component which is used in electrical circuits that require high safety and reliability functions or performance.

# Mouser Electronics

Authorized Distributor

Click to View Pricing, Inventory, Delivery & Lifecycle Information:

[Wurth Electronics:](#)

[744771122](#)